



Canada's Regulated Nurses

A Look at Internationally Educated Nurses in Ontario and Canada



Canadian Institute
for Health Information
Institut canadien
d'information sur la santé



Outline

- CIHI Snapshot
- Health Workforce Information at CIHI
- Internationally Educated Nurses
 - Nurses in Canada
 - Internationally Educated Nurses in Ontario
- Trends to Watch

CIHI Snapshot

- Independent, not-for-profit corporation
- 27 data holdings
- Expertise in:
 - Data collection and analysis
 - Information standards
 - Education and outreach



CIHI's Data Holdings

- 27 databases of comparable health information
 - Health spending
 - Health workforce
 - Types of care: acute hospital, specialized services, community and pharmaceutical care
- A single database may receive an average of up to 3.2 million records per month

Health Workforce

- Data on 31 health professions, including record-level data collection for
 - Physicians
 - Regulated nurses
 - Pharmacists
 - Occupational therapists
 - Physiotherapists
 - Medical laboratory technologists
 - Medical radiation technologists



Health Workforce Database (HWDB)



Content

- Record-level supply and distribution information on OT, PT, MLT, MRT, RN/NP, LPN, RPN and Pharmacists, including demographics, education and employment
- Aggregate-level supply information on 23 other health professions

Data source

- Provincial and territorial regulatory bodies
- National associations
- Provincial/Territorial government

Data availability

- Varies by profession
- Selected historical data back to 1980

Health Workforce Information Data Dictionary



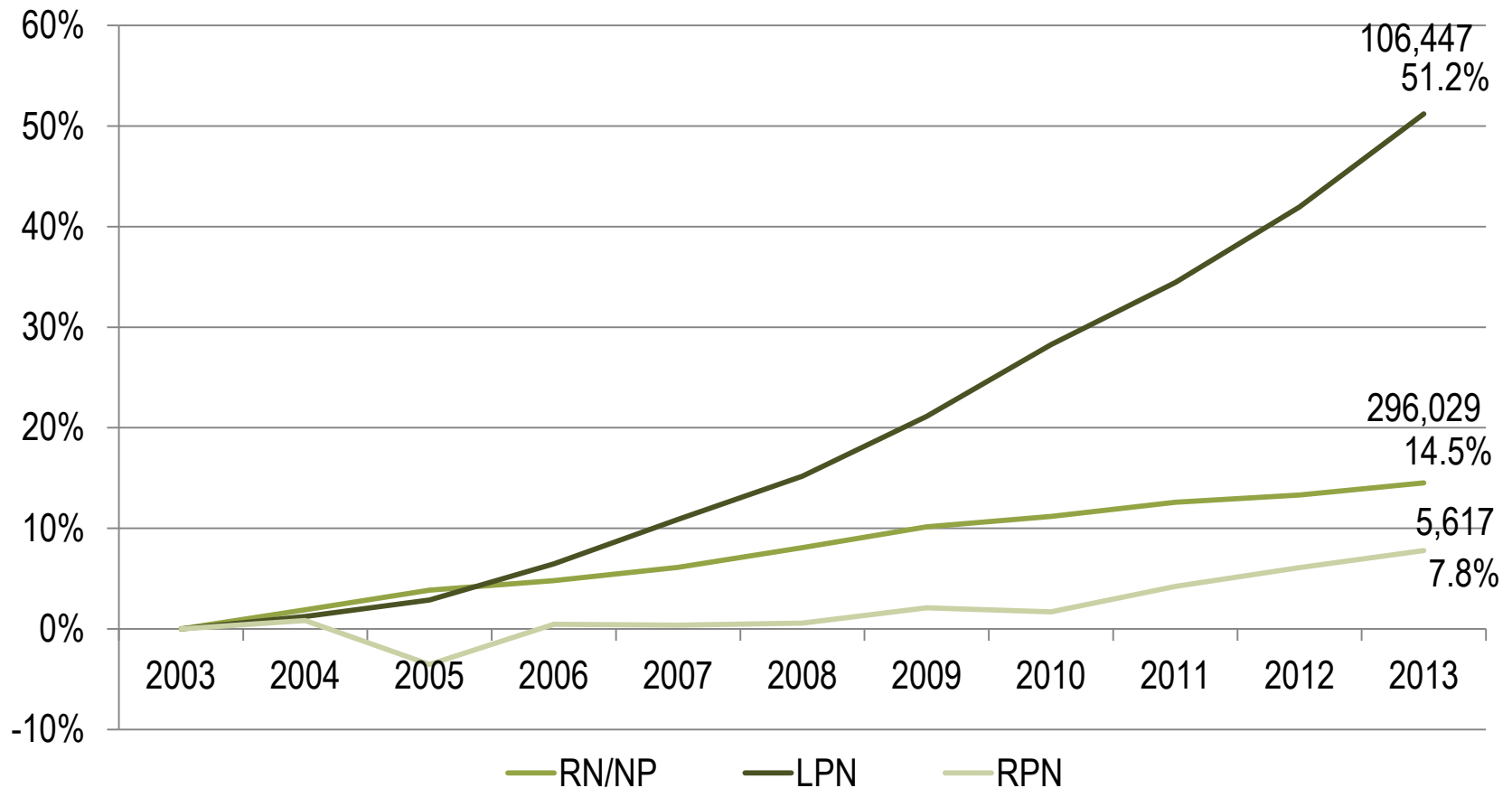
- Demographics
- Registration ID Number
 - Sex
 - Birth Year

Geography	<ul style="list-style-type: none">• Residence Province• Residence Country• Registration Province
Education	<ul style="list-style-type: none">• Initial Education in Profession• Graduation Year• Location of Graduation• Post-Basic Education in Profession• Education Outside of Profession
Employment	<ul style="list-style-type: none">• Employment Status• Hours Worked• Full-Time/Part-Time Status• Employment Location• Place of Work• Position
Other	<ul style="list-style-type: none">• Registration Number Type



Canada's Regulated Nurses

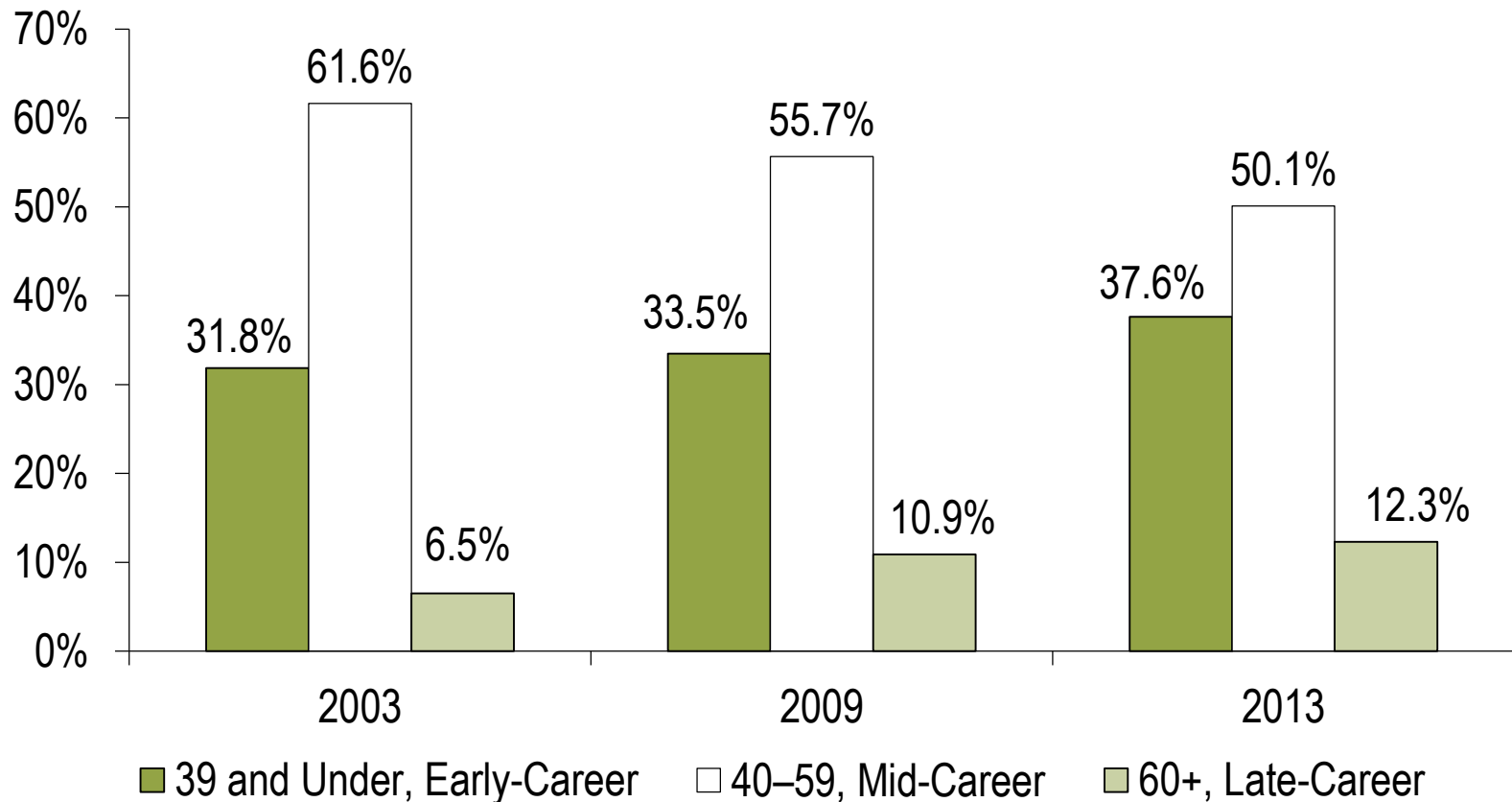
Percentage Growth in the Supply of Regulated Nurses, Canada, 2003–2013



Source

Health Workforce Database, CIHI, 2014.

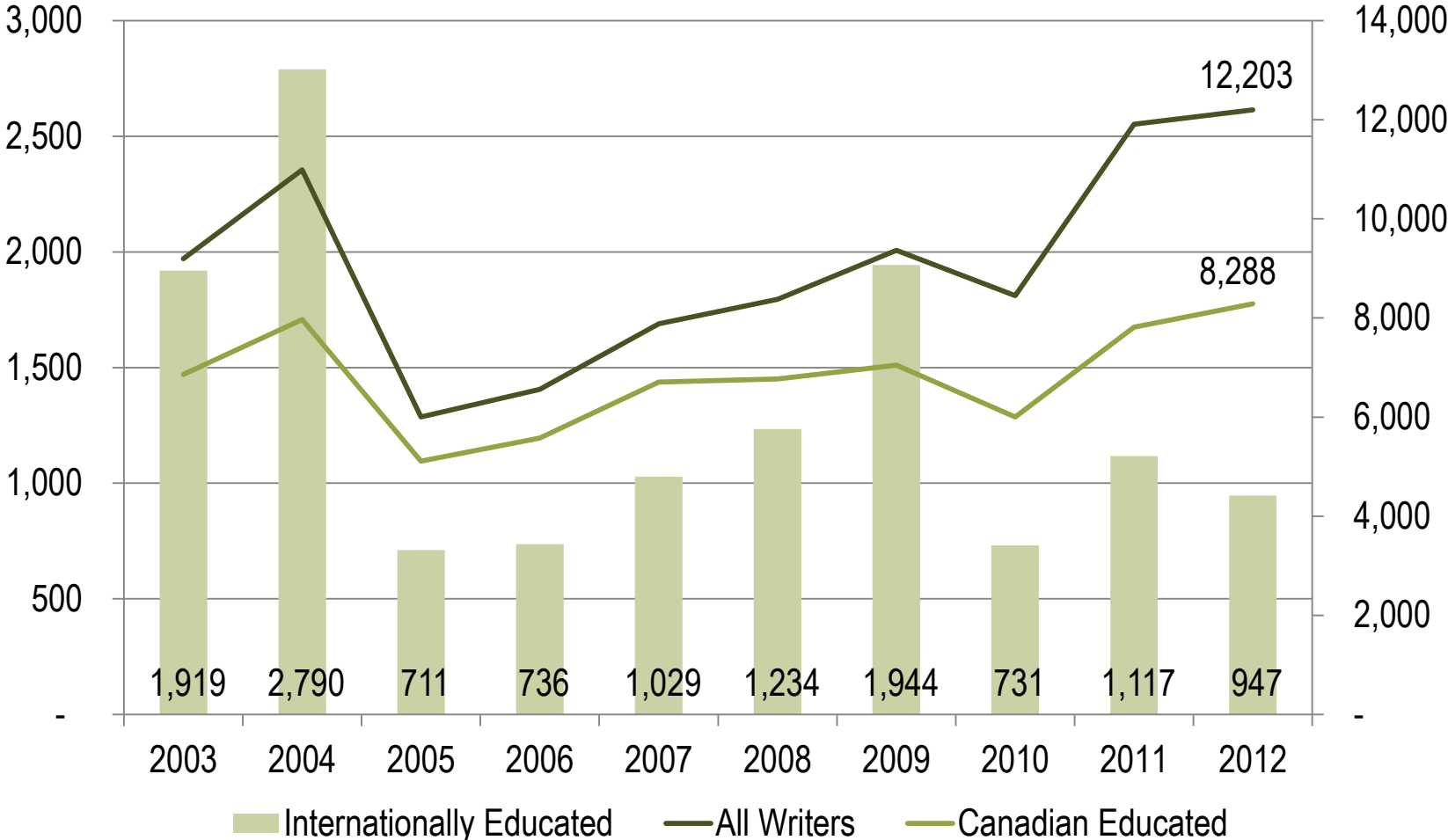
Regulated Nurses by Selected Age Groups, Canada, 2003, 2009 and 2013



Source

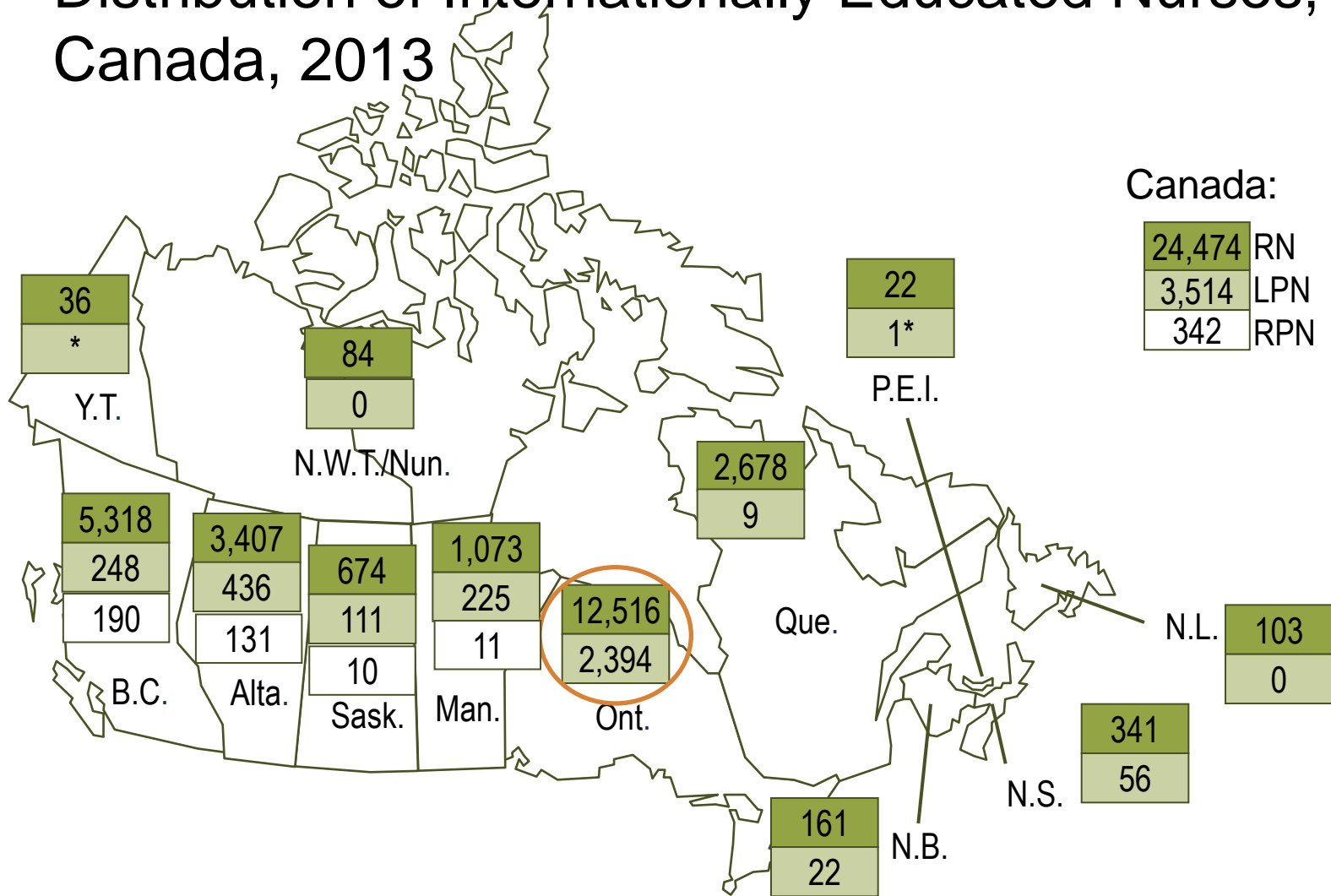
Health Workforce Database, CIHI, 2014.

Summary Statistics for the CRNE and EAIC, 2003 to 2012



Source
 CRNE Bulletin/Report, CNA, 2010 - 2013.

Distribution of Internationally Educated Nurses, Canada, 2013

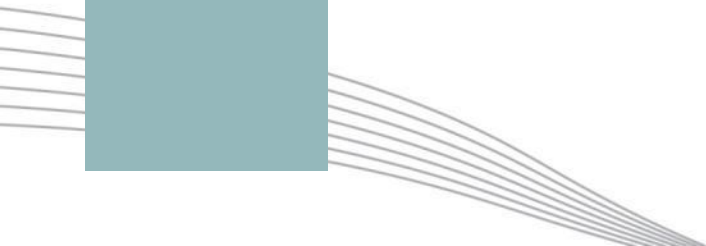
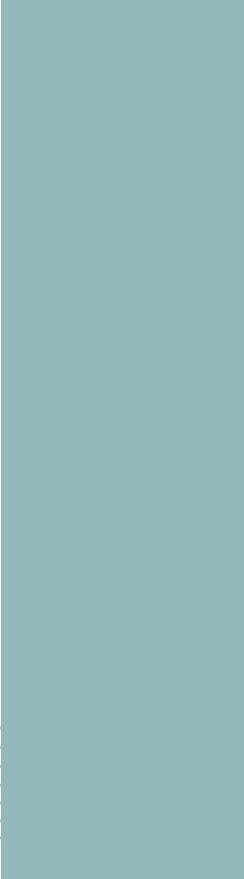


Source

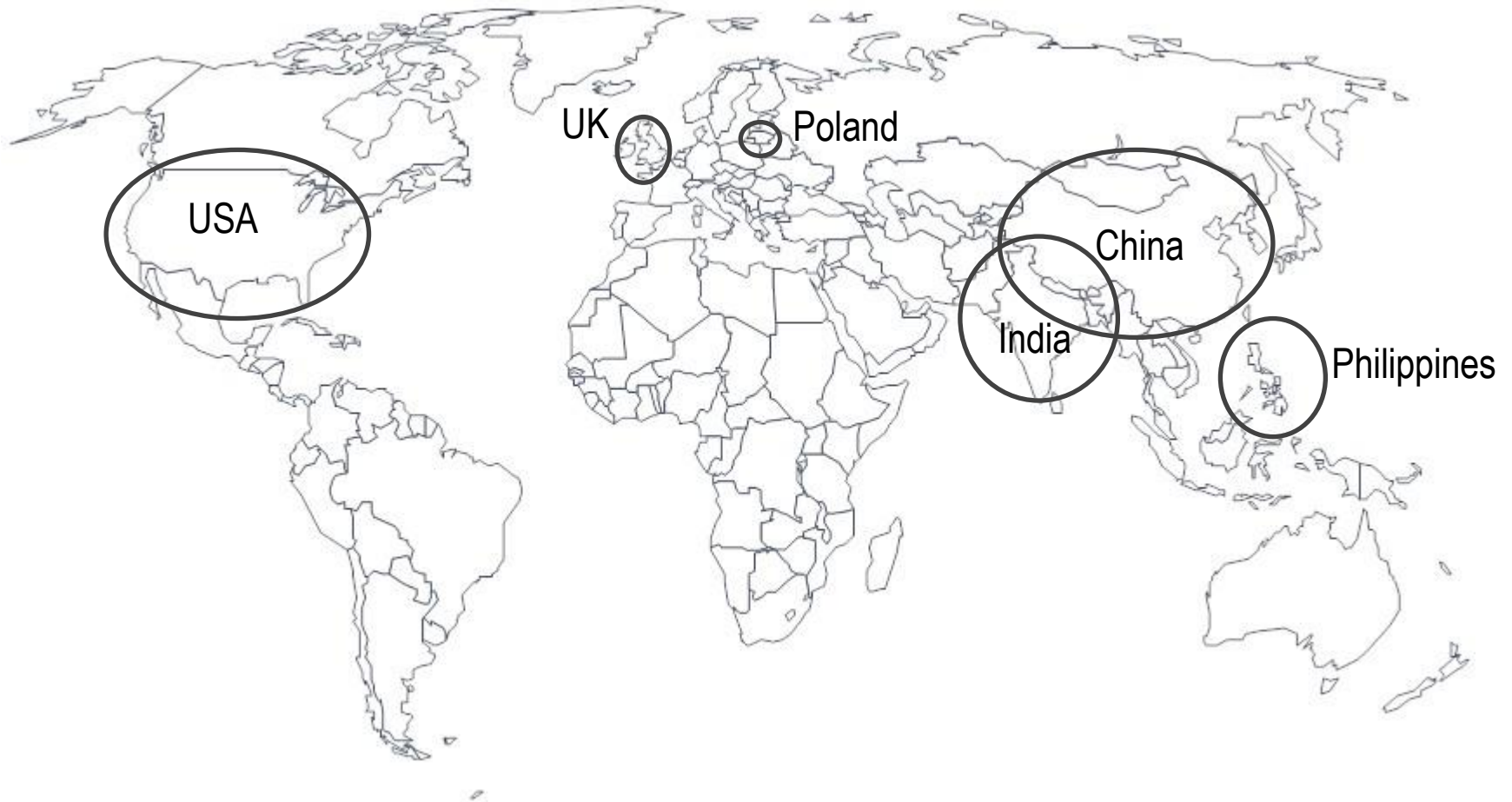
Health Workforce Database, CIHI, 2014.



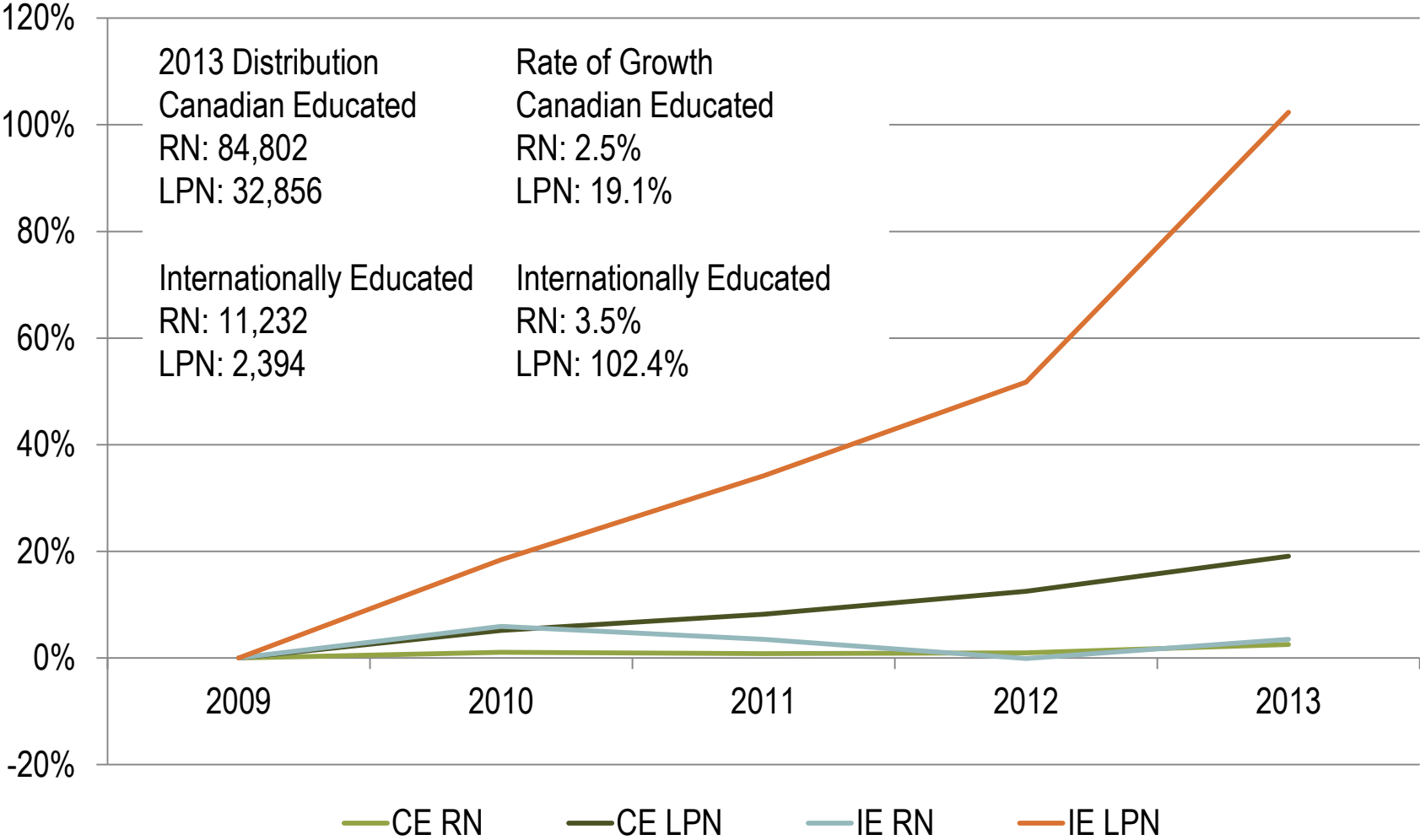
Internationally Educated Nurses in Ontario



Top Countries of Internationally Educated Nurses in Ontario, 2013

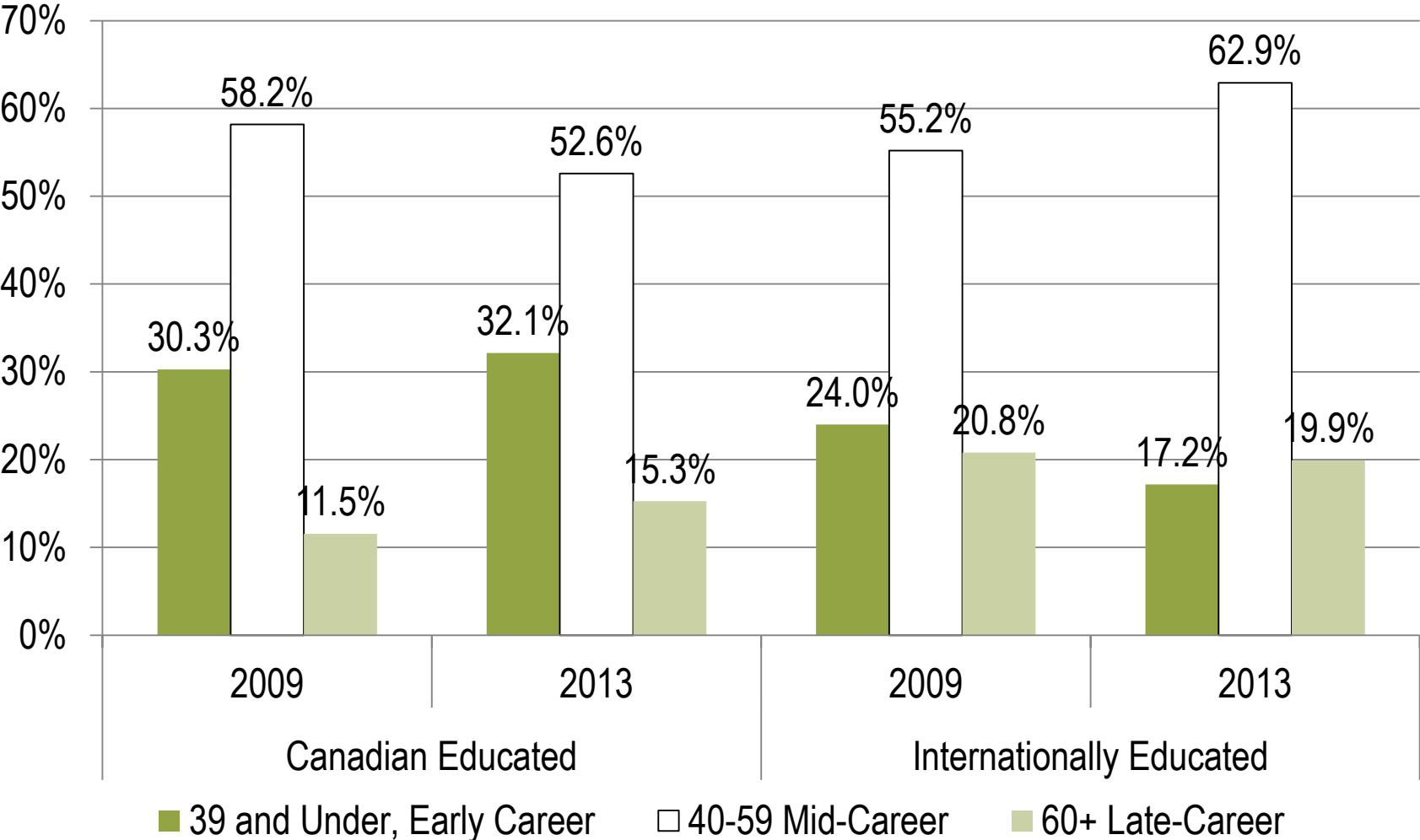


Growth in the Supply of Nurses, Ontario, 2009 to 2013



Source
Health Workforce Database, CIHI, 2014.

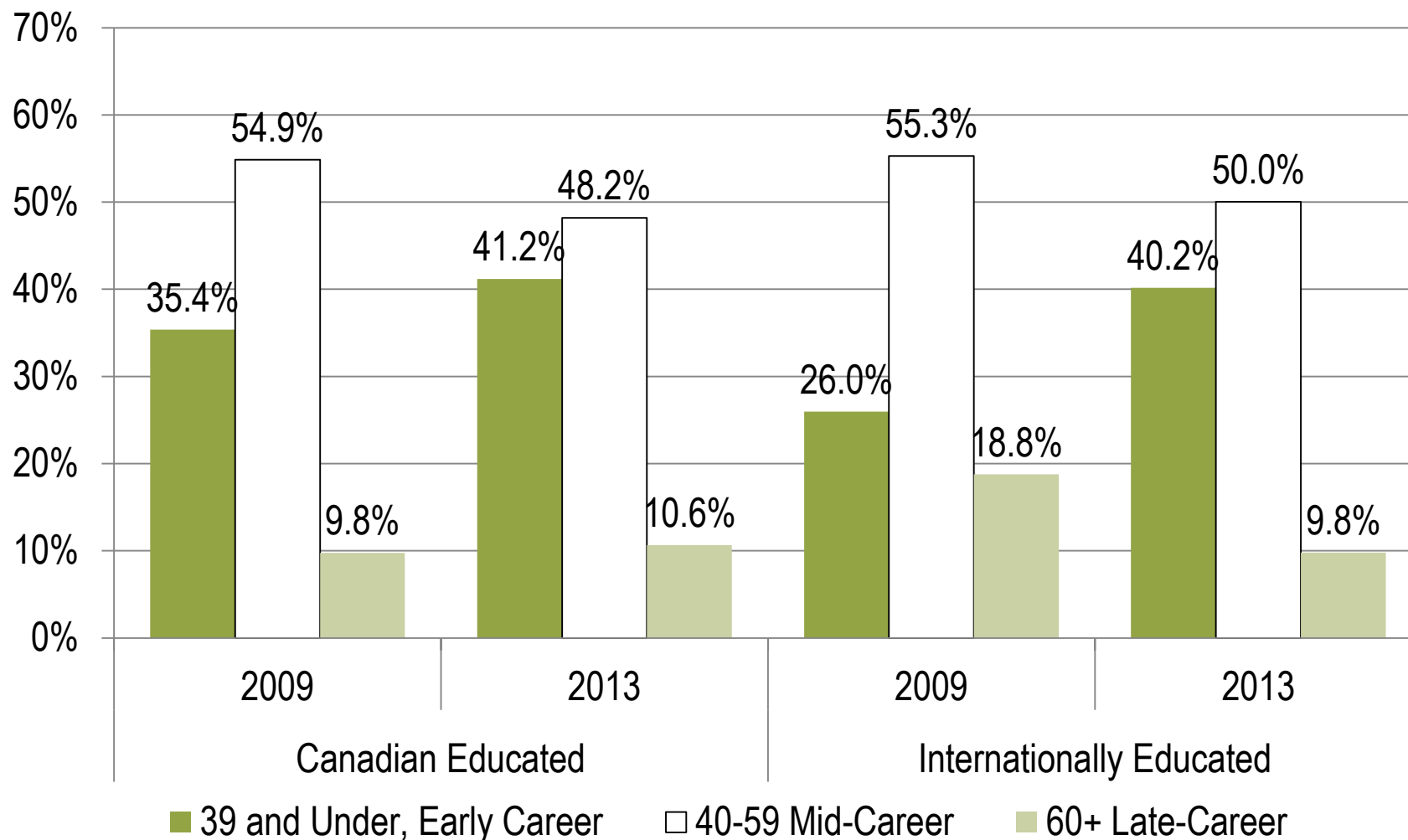
RNs by Selected Age Groups, Ontario, 2009 and 2013



Source

Health Workforce Database, CIHI, 2014.

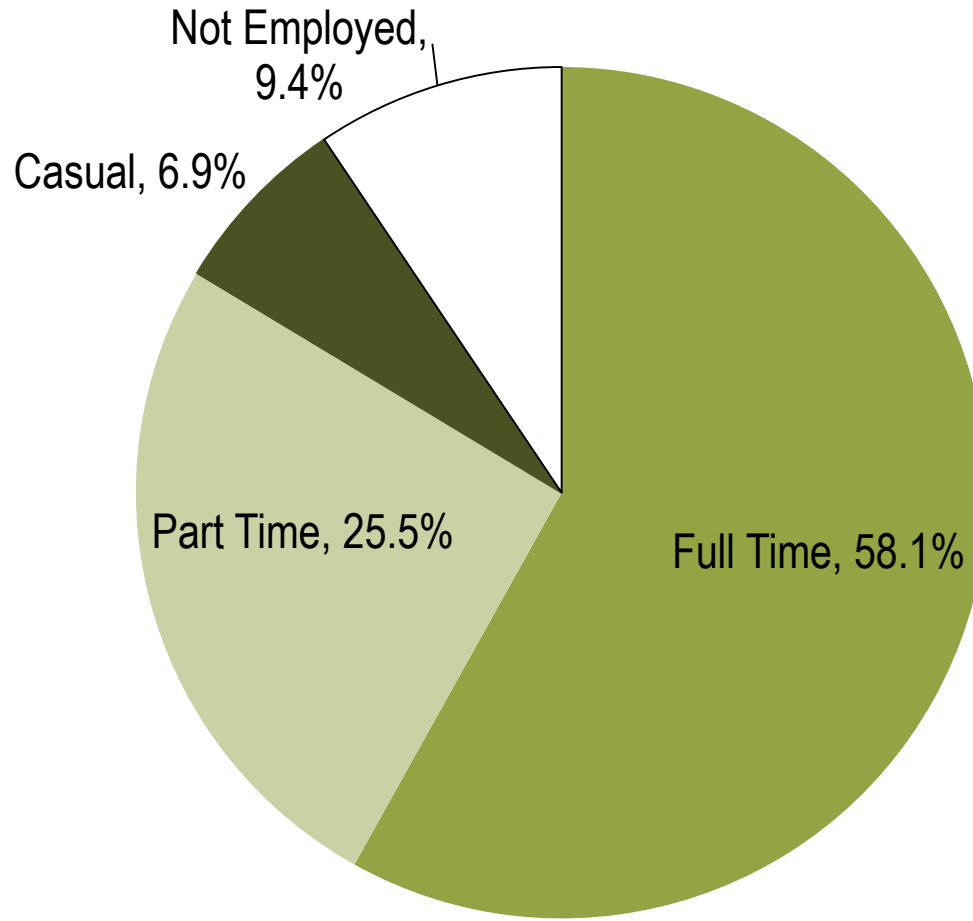
LPNs by Selected Age Groups, Ontario, 2009 and 2013



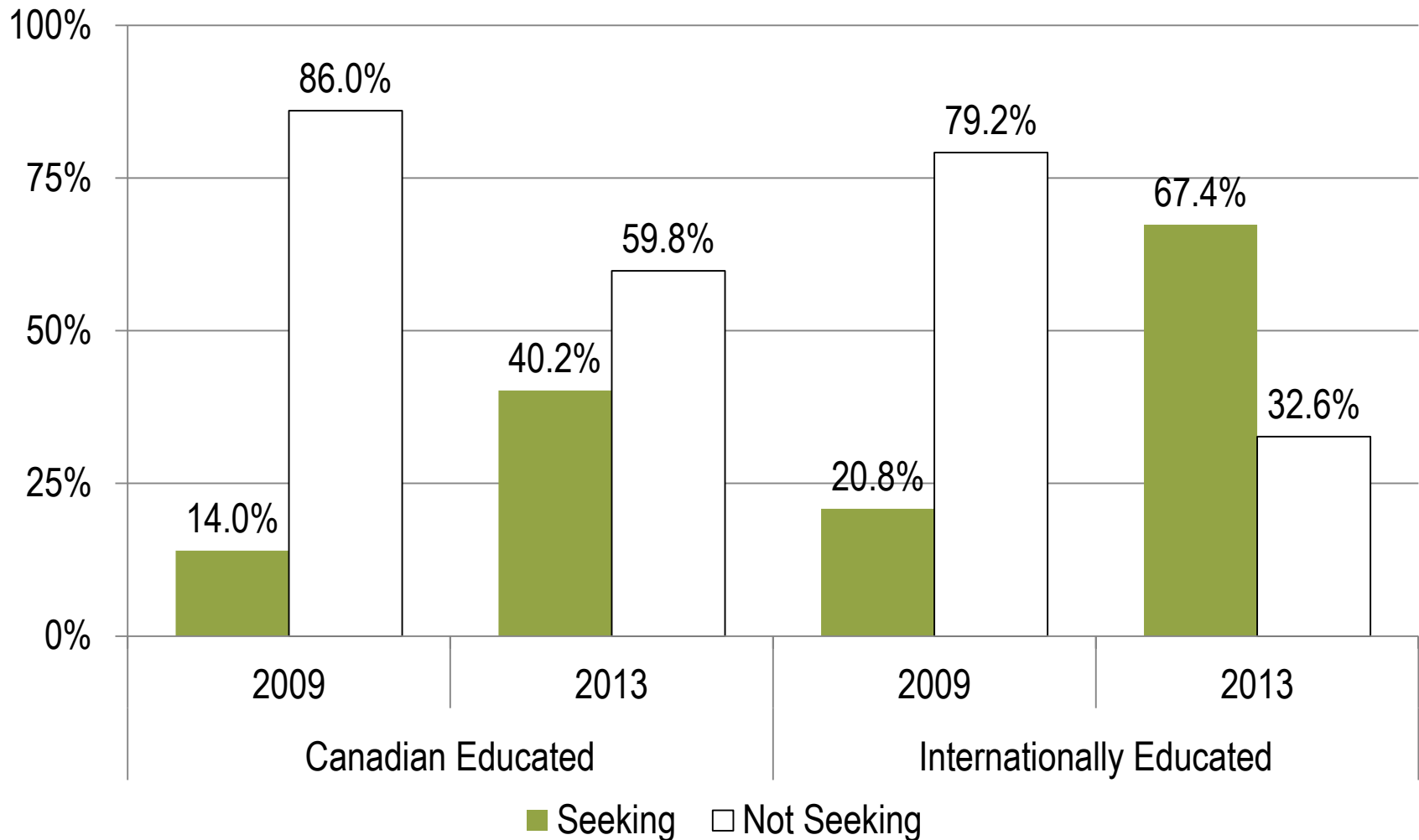
Source

Health Workforce Database, CIHI, 2014.

Employment Status for All Nurses in Ontario, 2013



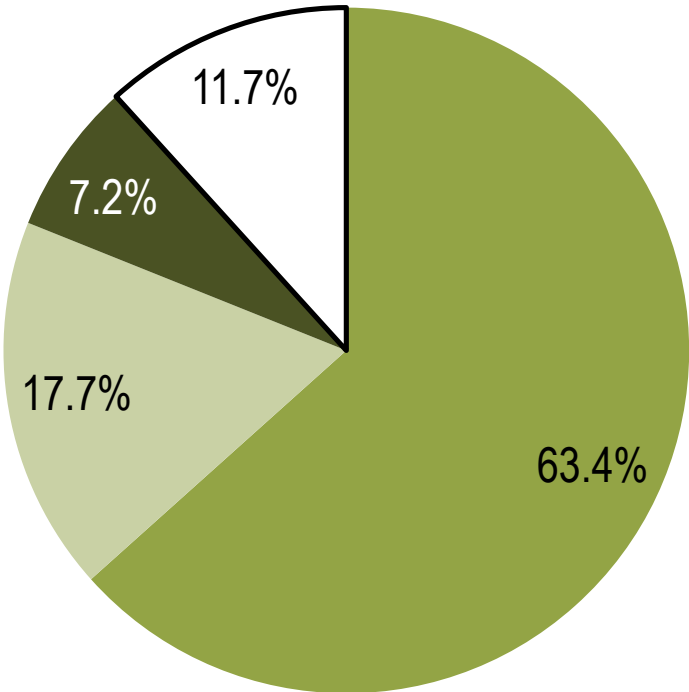
Nurses Not Employed in Nursing, Ontario, 2009 and 2013



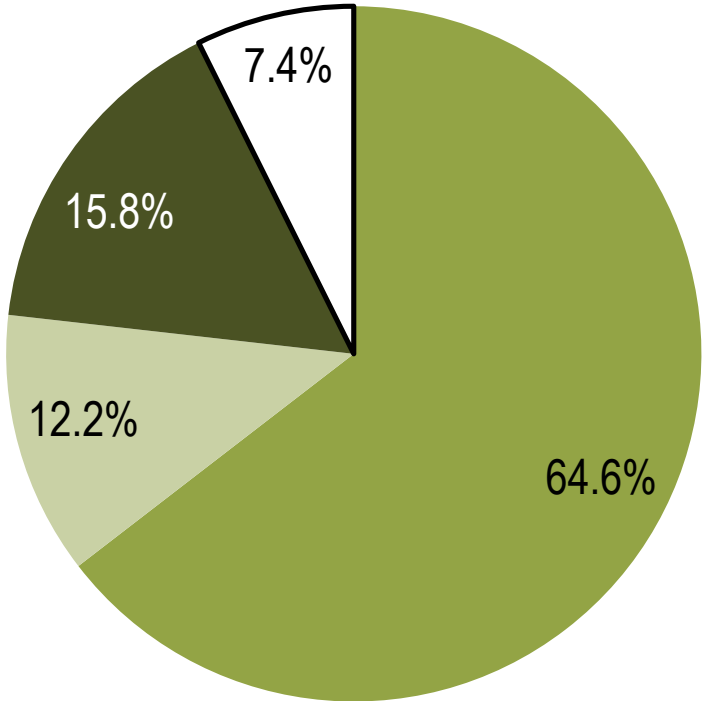
Source
Health Workforce Database, CIHI, 2014.

RNs by Place of Work and Position, Ontario, 2013

Canadian Educated



Internationally Educated



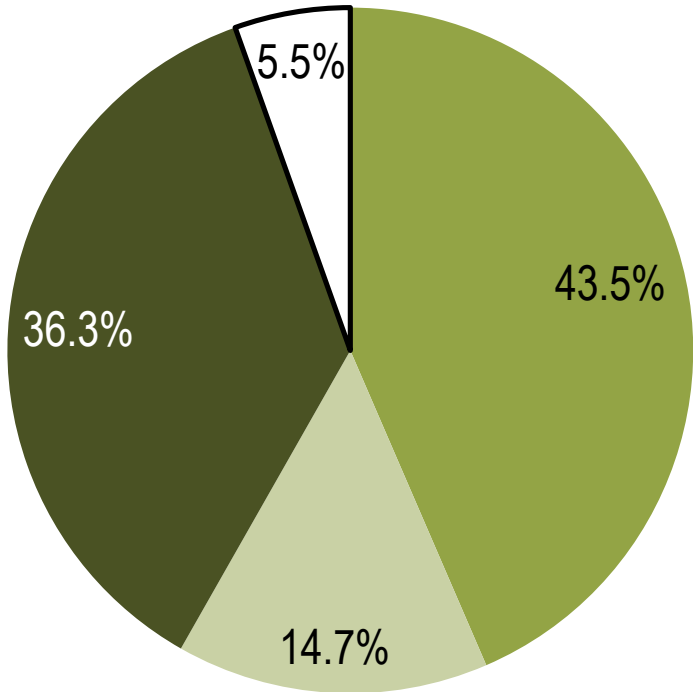
- Hospital
- Nursing Home/LTC Facility

- Community Health Agency
- Other Place of Work

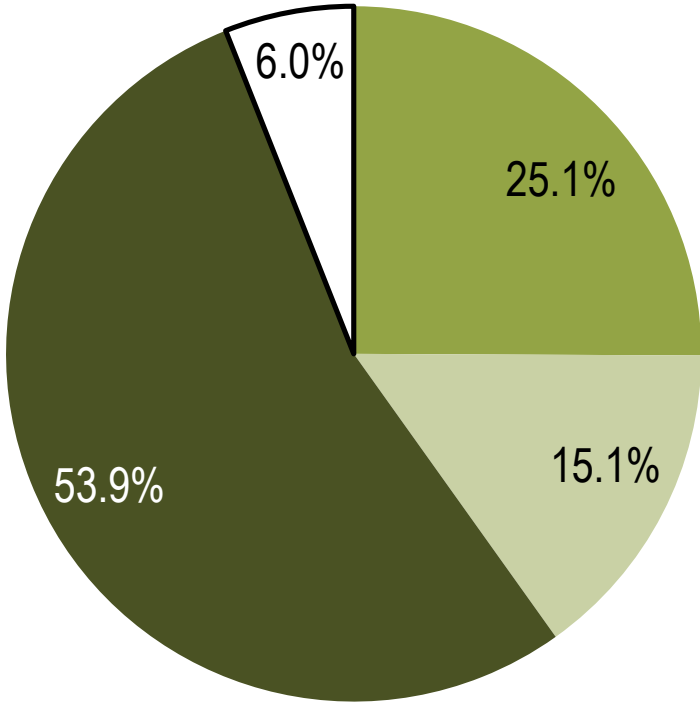
Source
Health Workforce Database, CIHI, 2014.

LPNs by Place of Work and Position, Ontario, 2013

Canadian Educated



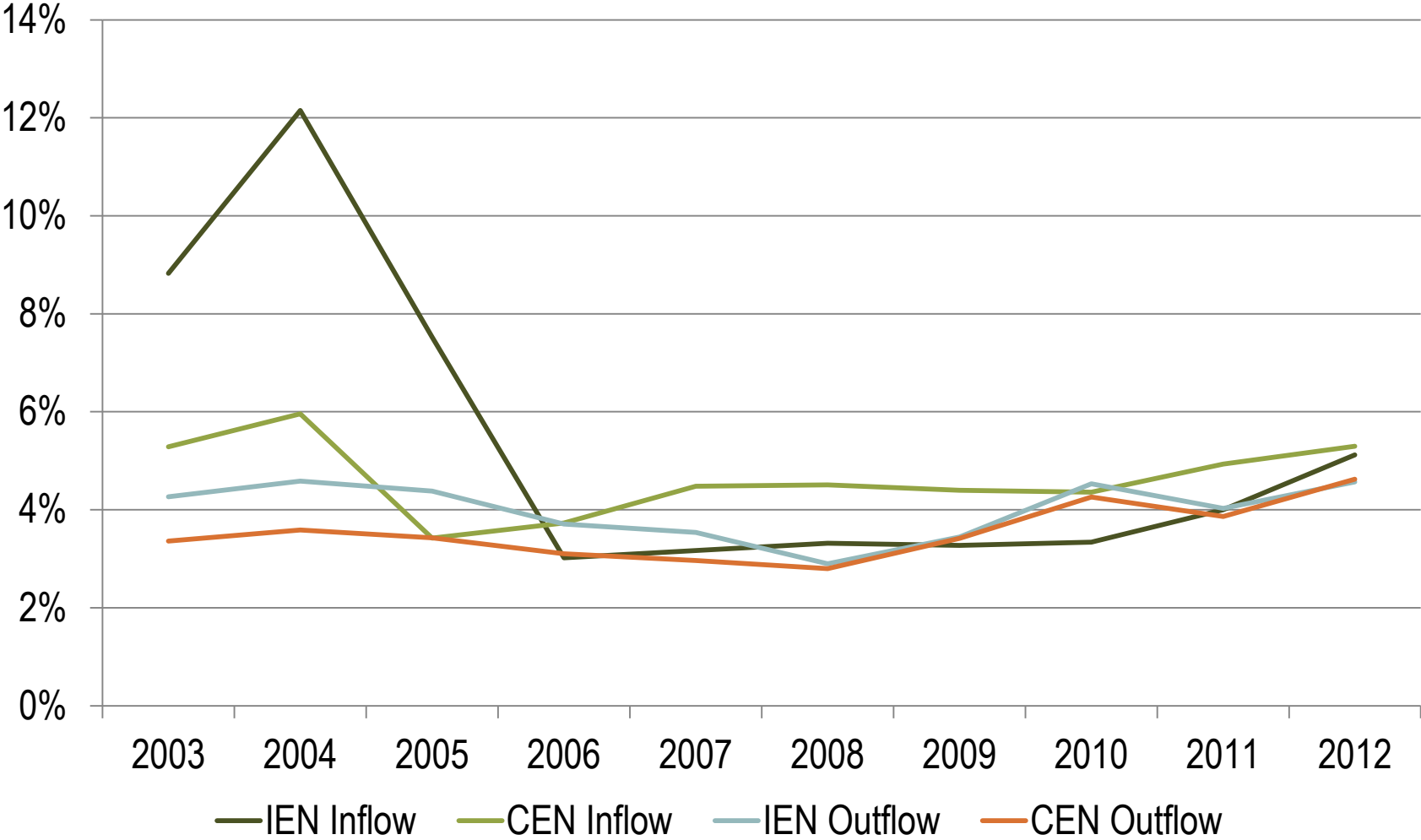
Internationally Educated



- Hospital
- Nursing Home/LTC Facility
- Community Health Agency
- Other Place of Work

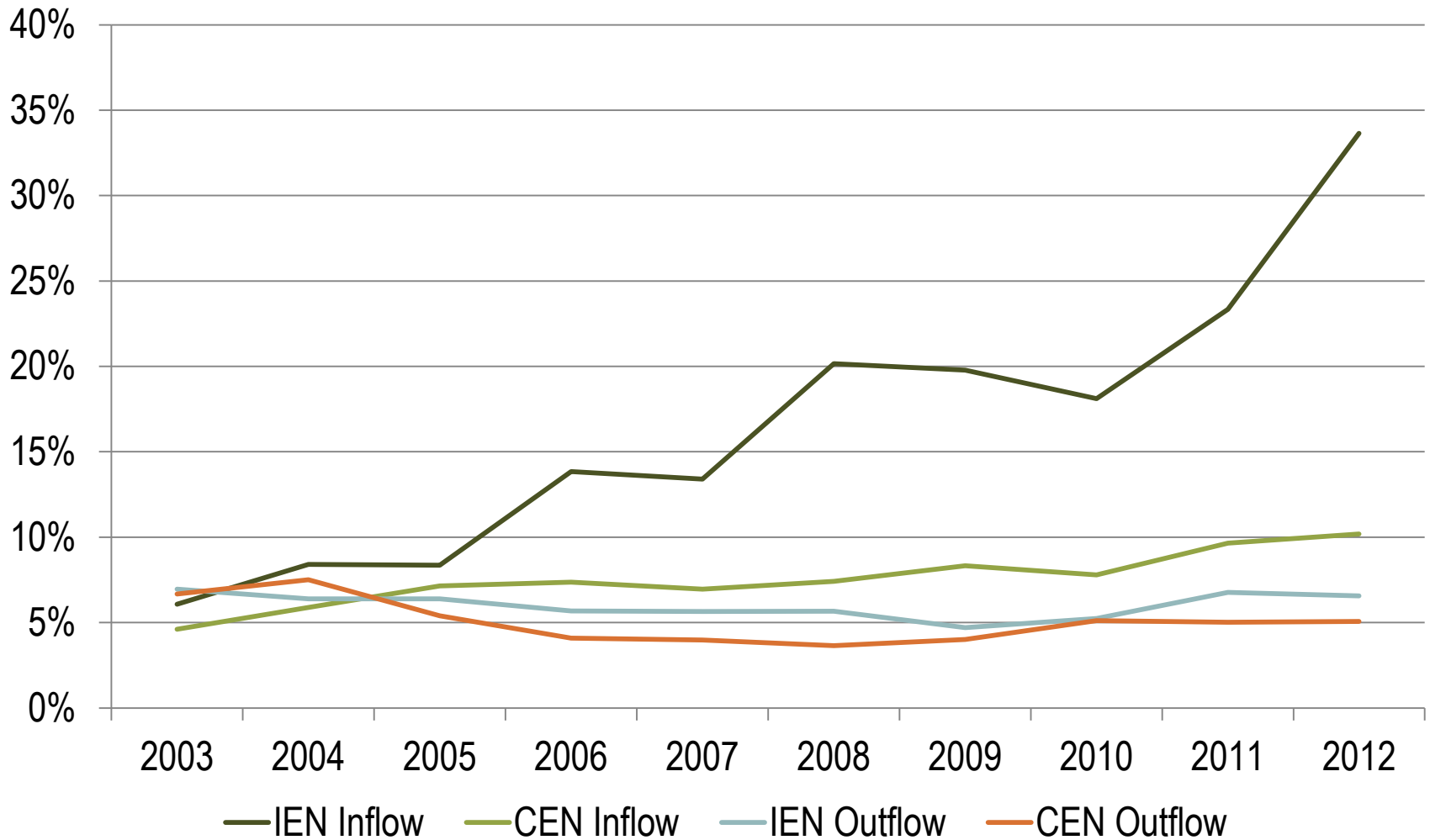
Source
Health Workforce Database, CIHI, 2014.

RN Rates of Inflow and Outflow, Ontario, 2003 to 2013



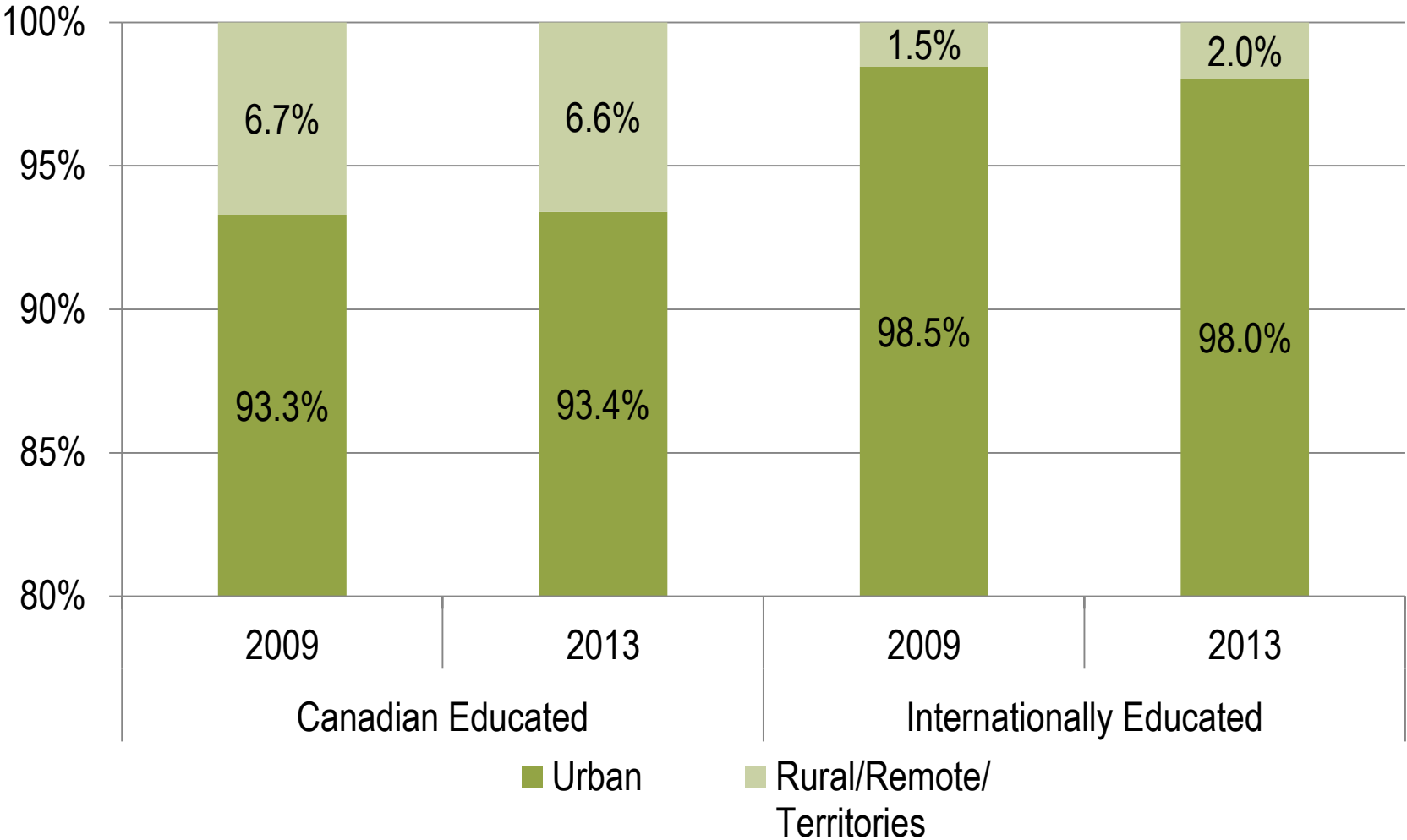
Source
Health Workforce Database, CIHI, 2014.

LPN Rates of Inflow and Outflow, Ontario, 2003 to 2013



Source
Health Workforce Database, CIHI, 2014.

Geographic Distribution of Nurses, Ontario, 2009 and 2013



Source
Health Workforce Database, CIHI, 2014.



Trends to watch

- Training / Education
- Regulatory Environment
- Workforce Trends

Questions





Andrea Porter-Chapman

Program Lead

Health Workforce
Information

hhr@cihi.ca

